



SAQA ID 118270
NQF LEVEL 07
2024/2025

Bachelor of Education In Foundation Phase Teaching

EDUTEL

HIGHER EDUCATION

OUR MISSION

Edutel commits to **academic excellence** in education, and the promotion of scholarship through the **creation of flexible, life-long learning opportunities** and an intellectually stimulating and **culturally vibrant, pleasant and safe environment** in which students and staff can flourish

Edutel places a **high premium on local relevance**, which is manifested through its **contribution to the prosperity, competitive and quality of life** in South Africa. In order to do so, Edutel must be **sensitive to national needs and societal contexts** of the country as well as the demands of the time. **Local relevance is also manifested in Edutel's commitment** to, and promotion of equity access, equal opportunities, redress, transformation and diversity.

TABLE OF CONTENTS

02	OUR MISSION	
06	GENERAL INFORMATION	
07	BED (FOUNDATION PHASE TEACHING)	
11	PROGRAMME STRUCTURE: FOUR-YEAR FULL-TIME DISTANCE PROGRAMME	18 RULES OF COMBINATION
12	PROGRAMME STRUCTURE: FIVE-YEAR DISTANCE PROGRAMME	18 WHEN CAN I REGISTER
14	STUDENT SUPPORT	19 STUDENT FINANCIAL AID
16	ASSESSMENT OF STUDENTS	19 POLICIES AND PROCEDURES
		20 GOVERNANCE AND MANAGEMENT OF EDUTEL HIGHER EDUCATION
		20 DIRECTORS, CHIEF EXECUTIVE AND SENIOR MANAGEMENT
		21 QUALIFICATIONS OF ACADEMIC STAFF

This prospectus is valid 31 December 2024.
A revised prospectus will be available from 1 January 2025.



higher education & training

Department:
Higher Education & Training
REPUBLIC OF SOUTH AFRICA

Private Bag 8174, PRETORIA, 0001, 123 Franca Barend Street, PRETORIA, 0002, South Africa
Tel: (012) 312 5911, Fax: (012) 321 6770
Private Bag 93192, CAPE TOWN, 8000, 103 Plain Street, CAPE TOWN, 8001, South Africa
Tel: (021) 469 5175, Fax: (021) 461 4761

Enq: B Sheodass: E-mail: Sheodass.B@hct.gov.za, Meeting Nos: 30/07/19 and 27/08/19; File Nos: EHE Pro 367 and EHE Pro 355

Mr A Pelsier
Edutel Higher Education (Pty) Ltd
PO Box 23009
HELDERKRUIJN
1733

By Email: edutel@iafrica.com

Dear Mr Pelsier

**RECOGNITION OF QUALIFICATIONS FOR EMPLOYMENT IN EDUCATION:
BACHELOR OF EDUCATION IN FOUNDATION PHASE TEACHING;
BACHELOR OF EDUCATION IN INTERMEDIATE PHASE TEACHING**

In response to the documentation received from Edutel Higher Education, I wish to inform you that the above programmes have been evaluated in accordance with the policy document *Revised Policy on the Minimum Requirements for Teacher Education Qualifications (2015)* and the final outcome of the evaluation process is as follows:

Bachelor of Education in Foundation Phase Teaching (500 credits; NQF Exit Level 7):
approved and recognised initial teaching qualification for employment in education.

Bachelor of Education in Intermediate Phase Teaching (505-520 credits; NQF Exit Level 7):
approved and recognised initial teaching qualification for employment in education.

Each qualification is evaluated as REQV 14, professionally qualified subject to the *National Education Policy on Recognition and Evaluation of Qualifications for Employment in Education, 2017*.

Edutel Higher Education is reminded that this approval is subject to:

- the institution being registered with the Department of Higher Education and Training as a private higher education institution to offer the programmes; and

- the programmes being accredited by the CHE/HEQC.

Yours sincerely



Dr D Parker
Deputy Director-General: University Education

Date: 16/09/2019

Institution	Programme	Evaluation outcome
Edutel Higher Education	Bachelor of Education in Foundation Phase Teaching	Approved and recognised initial teaching qualification for employment in education.
Edutel Higher Education	Bachelor of Education in Intermediate Phase Teaching	Approved and recognised initial teaching qualification for employment in education.

1. General Information



MEET EDUTEL

Edutel is a group of companies specialising in fields of education and training, skills development and services. The first Edutel company was formed in 1999. In 2024 Edutel will celebrate 25 years of excellence in the field of education and training.

Edutel Higher Education (Pty) Ltd is accredited with CHE/HEQC.

Edutel Higher Education (Pty) Ltd is registered with the Department of Higher Education and Training until 31 December 2025 as a private higher education institution under the Higher Education Act, 1997. Registration Certificate No.2017/HE07/001.

Is this qualification recognised?

The qualification is registered on the NQF, SAQA ID 118270

The qualification is recognised by the Department of Education and is considered for REQV improvement.


2. BEd (Foundation Phase Teaching)




DURATION

A minimum of four years for unemployed students (full-time distance) or five years for employed students (part-time distance)

ADMISSION REQUIREMENTS

 A National Senior Certificate (Matric) granting access to bachelor degree studies.


OR


 A Senior Certificate (SC) with matriculation exemption with at least a D symbol on HG or a C symbol on SG in the language of teaching and learning (prior to 2008).

OR

 A National Certificate Vocational (NCV), that meets the requirements for admission to a bachelor degree.


OR


 A former three-year Education Diploma or a National Professional Diploma in Education – (360 credits at level 5). For example, Diploma in Grade R Teaching.

 Teachers who are in possession of a recognised Certificate or Diploma in education may present their qualifications for entry into Bachelor of Education with a possibility of credit transfer for successfully completed modules.

Credit Accumulation Transfer may be considered for successfully completed modules up to 180 credits. Students enrol for the remaining 320 credits of the BEd (Foundation Phase Teaching), after successfully applying for assessment of prior learning

OR

 A former undergraduate Higher Diploma in Education or a former Further Diploma in Education (NQF Level 6).

 Teachers who are in possession of a recognised Certificate or Diploma in education or any other relevant field may present their qualifications for entry into Bachelor of Education with a possibility of credit transfer for successfully completed modules.

Credit Accumulation Transfer may be considered for successfully completed modules up to 180 credits. Students enrol for remaining 320 credits of the BEd (Foundation Phase Teaching), after successfully applying for assessment of prior learning

OR

 Assessment of prior learning (RPL) could also lead to entry or advanced credit standing.

Please contact us if you are not sure whether you comply with the admission requirements.

Matured Age Exemption

Should you have not passed your matric with exemption, are above the age of 23 and comply with the above mentioned language requirements, you can apply for matured age exemption. Please visit the following website for the information, relevant forms and cost: mb.usaf.ac.za



LEARNING ASSUMED TO BE IN PLACE

It is assumed that the student is competent in the Home Language of choice as well as English at Senior Certificate Level. The following home languages are offered: Setswana, isiZulu, isiXhosa, Sepedi, English or Afrikaans. Please note that at least 15 students must register before a specific language will be offered.

Basic computer literacy will enable students to access the student support actions available.

COMPUTER LITERACY AND REQUIREMENTS

It is expected of all students to have access to a computer device and data/wifi in order to submit all the assignments and/or online examinations on Edutel Online.

The computer literacy online workshop is developed to assist you with writing e-mails to Edutel Higher Education, accessing the internet in the use of Edutel Online and to complete and submit your assignments on Edutel Online. Should you not have access to a computer or the internet to access Edutel Online and the chat rooms, please visit the nearest Vodacom Teacher Centre.

Communication and ICT Skills is a compulsory module of the BEd (Foundation Phase Teaching). It is important that every student be computer literate. This module guides you to understand your computer, and the use of Microsoft Word, Excel and PowerPoint. It will also assist you to access the internet, using Microsoft Outlook for e-mails and storage of information. If you still struggle with computer literacy, we recommend that you attend an additional online computer literacy workshop which will be made available to registered students after registration.



SACE REGISTRATION

All BEd (Foundation Phase Teaching) students must register with SACE after registering for the BEd (Foundation Phase Teaching). Please visit www.sace.org.za for more information regarding registering with SACE.

WHAT IF I ALREADY HAVE CERTAIN KNOWLEDGE AND EXPERIENCE?

Edutel Higher Education is a strong supporter of Recognition of Prior Learning. For this reason, students may apply for RPL.

Edutel Higher Education accepts Recognition of Prior Learning as an integral part of the academic programme. Students can apply for Recognition of Prior Learning and will need to comply with all the admission requirements of the BEd (Foundation Phase Teaching).

A completed Diploma in Grade R Teaching allows for admission into the Bachelor of Education in Foundation Phase Teaching. A maximum of 180 credits, gained while studying for the diploma, may be recognised towards the BEd (Foundation Phase Teaching).



HOW TO APPLY FOR RPL

Please e-mail us at jpillay@edutel.ac.za for an RPL application form, or for more information.

3. Programme Structure: Four-Year Full-Time Distance Programme

PLEASE NOTE:

Edutel Higher Education offers students two options:

- Unemployed students who will study full-time, via distance learning, on the four-year distance learning programme.
- Employed students who will study part-time, via distance learning, on the five-year distance learning programme.

All modules are compulsory, including English as First Additional Language (in years 1 and 2). The EXCEPTION is Home Language modules, Second Additional Language modules (language of communication) and First Additional Language modules in year 3. Here students have a choice between the different Home Languages, Second Additional Languages where the student must select one Home Language, one Second Additional Language and one First Additional Language (year 3) from the languages presented.

The Home Language selected must be aligned with the Home Language completed in matric (senior certificate level). If Edutel does not offer the Home Language that students completed in matric or in another qualification, students can select the next language that they are the most familiar with.

The Second Additional Language is determined by the Home Language of choice. The table below will guide students in selecting their Second Additional Language.

Home Language	Choice of Second Additional Language (LOCC)
isiXhosa or isiZulu	Sepedi or Setswana (Sotho families), Afrikaans
Sepedi or Setswana	isiXhosa or isiZulu (Nguni families), Afrikaans
English or Afrikaans	isiXhosa, isiZulu, Sepedi, Setswana

In year 3, students need to choose a First Additional Language. If Edutel offers the First Additional Language that students completed in matric (senior certificate level) or in another qualification, the same First Additional Language must be selected. If we do not offer the First Additional Language that students completed in matric, students must select the next language that they are the most familiar with.

Option 1: Four-Year Part-Time Distance Learning (Semester 1)

First Year	Second Year	Third Year	Fourth Year
Home Language 1- AHL 510, EHL 510, ZHL 510, SHL 510, THL 510, XHL 510 [20C]	Home Language 2- AHL 620, EHL 620, ZHL 620, SHL 620, THL 620, XHL 620 [20C]	Home Language Teaching and Learning- AHL 640, EHL 640, ZHL 640, SHL 640, THL 640, XHL 640 [20C]	Home Language Teaching and Learning- AHL 740, EHL 740, ZHL 740, SHL 740, THL 740, XHL 740 [20C]
**Information and Communication Technology - ICT 500 [15C]	Life Skills: Beginning Knowledge - LBK 510 [15C]	Life Skills: Physical Education - LPE 610 [15C]	Life Skills: Creative Arts - LCA 710 [15C]
Education Psychology and Sociology in Education- EPS 620 [15C]	Professional Studies in Education 1- PSE 710 [20C]	Professional Studies in Education 2- PSE 720 [20C]	Professional Studies in Education 3 - PSE 730 [20C]
**Second Additional Language (Language of Communication)- SAFB 510, SSEB 510, SZUB 510, SSTB 510, SXHB 510 [15C]	Inclusive Education - IED 610 [15C]	Education Philosophies - EDP 610 [15C]	

Option 1: Four-Year Part-Time Distance Learning (Semester 2)

First Year	Second Year	Third Year	Fourth Year
English First Additional Language 1- ENG 510 [15C]	English First Additional Language 2- ENG 520 [15C]	English First Additional Language 3- ENG 630, AFR 630, SEP 630, SET 630, XHO 630, ZUL 630 [20C]	Foundations of Law, Ethics, and Values in Education – LEV 620 [10C]
Coding and Robotics - CAR 610 [15C]	Health, Safety and Nutrition- HSN 630 [15C]		Classroom Management- CMA 610 [15C]
Elementary Mathematics- MAT 510 [15C]	Mathematics Teaching and Learning - MAT 620 [15C]	Mathematics Teaching and Learning- MTL 630 [15C]	Mathematics Teaching and Learning - MTL 720 [15C]
**Work Integrated Learning 1- WILB 510 [15C]	**Work Integrated Learning 2- WILB 610 [15C]	**Work Integrated Learning 3 - WILB 620 [20C]	**Work Integrated Learning 4 - WILB 710 [25C]

125 Credits

130 Credits

125 Credits

120 Credits

TOTAL number of credits for the programme = 500

**** No formal examinations will take place for these modules. For non-examinable modules, a quiz on Edutel Online will count 20%. Two formal assignments contribute 50% and 30%, towards the final mark.**

4. Programme Structure: Five-Year Distance Programme

Option 2: Five-Year Part-Time Distance Learning (Semester 1)				
First Year	Second Year	Third Year	Fourth Year	Fifth Year
Home Language 1- AHL 510, EHL 510, SHL 510, ZHL 510, THL 510, XHL 510 [20C]	Home Language 2- AHL 620, EHL 620, ZHL 620, SHL 620, THL 620, XHL 620 [20C]		Home Language Teaching and Learning- AHL 740, EHL 740, ZHL 740, SHL 740, THL 740, XHL 740 [20C]	Home Language Teaching and Learning- AHL 740, EHL 740, ZHL 740, SHL 740, THL 740, XHL 740 [20C]
Information and Communication Technology- ICT 500 [15C]	Life Skills: Beginning Knowledge - LBK 510 [15C]	Life Skills: Physical Education - LPE 610 [15C]	Life Skills: Creative Arts- LCA 710 [15C]	
Education Psychology and Sociology in Education – EPS 620 [15C]	Professional Studies in Education 1 – PSE 710 [20C]	Professional Studies in Education I – PSE 720 [20C]		Professional Studies in Education 3: - PSE 730 [20C]
Second Additional Language (Language of Communication) – SAFB 510, SSEB 510, SZUB 510, SSTB 510, SXHB 510 [15C]	Inclusive Education - IED 610 [15C]		Education Philosophies- EDP 610 [15]	

Option 2: Five-Year Part-Time Distance Learning (Semester 2)				
First Year	Second Year	Third Year	Fourth Year	Fifth Year
English First Additional Language 1- ENG 510 [15C]	English First Additional Language 2- ENG 520 [15C]	First Additional English First Additional Language 3- ENG 630, AFR 630, SEP 630, SET 630, XHO 630, ZUL 630 [20C]		Foundations of Law, Ethics, and Values in Education – LEV 620 [10C]

Coding and Robotics - CAR 610 [15C]		Health, Safety and Nutrition – HSN 630 [15C]	Classroom Man- agement – CMA 610 [15C]	
Elementary Mathematics- MAT 510 [15C]	Mathematics Teaching and Learning - MAT 620 [15C]	Mathematics Teaching and Learning – MTL 630 [15C]	Mathematics Teaching and Learning – MTL 720 [15C]	
	Work Integrated Learning 1- WILB 510 [15C]	Work Integrated Learning 2- WILB 610 [15C]	Work Integrated Learning 3- WILB 620 [20C]	Work Integrated Learning 4 - WILB 710 [25C]
110 Credits	115 Credits	100 Credits	100 Credits	75 Credits

TOTAL number of credits for the programme = 500

Work-Integrated Learning (WIL)

Work-Integrated Learning (WIL) is the term given to educational activities that integrate academic learning of a discipline with its practical application in the workplace. The aim is to ensure that students develop the ability to integrate their learning through a combination of academic and work-related activities.

Students are required to select a school in the area they live, where Foundation Phase is being taught. The school must have an appointed HOD for Foundation Phase and an EMIS number. Apart from selecting a qualifying school, the school must also make a mentor teacher available to mentor and assess the student, during WIL.

Edutel Higher Education reserves the right to approve or reject the selected school. Should Edutel Higher Education not approve of the school, the student will be required to select another school, complete the appendices again, and submit to Edutel Higher Education.

Once Edutel Higher Education has approved the school it is accepted that you will complete your WIL at the specific school. Should you for some reason wish to change your school, please inform the Registrar of such change, to obtain approval for the new school chosen.

Should you register between 1 June and 31 December, you will be required to do your WIL either in August or September. Should you register between 1 January and 31 May, you will be required to do your WIL in February or March.

During the 20 weeks' school-based teaching practice (WIL), the students will engage in teaching within the professional school environment, under the supervision of experienced teachers as mentors, and will be formally assessed by suitably qualified assessors of Edutel Higher Education.

Note:

- **All students enrolled for the four-year full-time distance programme will start with the four weeks of teaching practice (WIL) in the second part of their first year.**
- **All students enrolled for the five-year part-time programme will start with the four weeks of teaching practice (WIL) in the second part of the year, of their second study year.**

HOW DO YOU STUDY AT EDUTEL HIGHER EDUCATION?

The BEd (Foundation Phase Teaching) is a part-time modular qualification that makes use of a blended mode of learning. This means that students will register for a qualification as a distance student and will work at home on the study material provided, but have at their disposal several ways in which to facilitate their studies. Edutel Higher Education will provide student support through the following distribution channels during the teaching and learning process; Pep courier service (Paxi), e-mail, multimedia lectures, Edutel Online learning platform, SMSs, the Edutel Online Mobile app, Facebook, Twitter and telephone in order to complete this degree.

STUDY MATERIALS

On registration students will receive the following:

- An **Administrative Booklet** containing all the administrative information they will require to successfully complete their studies.
- A **Study Guide** for all modules, written in the format of the dialogues that would have taken place between the student and the Lecturer in a contact situation.
- A **Tutorial Letter** for each module to further guide their studies.
- **Online Assignments** for each module can be accessed on Edutel Online after registration.

No additional textbooks need to be purchased.

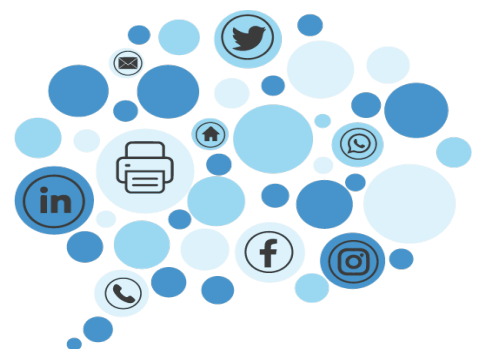
LANGUAGE OF INSTRUCTION

The language of instruction (study) is English. Should the subject you are enrolled for be an African Language, the instruction for examinations and assignments requires a response in the language concerned.

5. Student Support

Edutel Higher Education will provide student support through the following communication channels during the teaching and learning process:

- Edutel Online teaching and learning platform
- Chat rooms on Edutel Online
- Messaging through Edutel Online
- e-mail
- SMS
- Facebook
- Website
- Multimedia lectures
- Zoom sessions
- Telephone





ORIENTATION

Upon registration, the welcome letter with a link to watch the orientation video will be sent to your e-mail address. The orientation video contains information applicable to your qualification, programme structure, purpose, content and how the programme will be delivered.

Please make sure that you provide us with a reliable and correct e-mail address. If you have not received communication from us via e-mail at the start of the semester, please contact us to confirm your e-mail address/contact details.



MULTIMEDIA LECTURES

Edutel Higher Education makes use of multimedia lectures. These multimedia lectures will be presented by the respective lecturers, who are subject matter experts, to ensure you only receive the very best.

Multimedia lectures can be accessed via the Edutel Online app. These videos can be revisited as many times as needed. The first five (or more depending on the module concerned) multimedia lectures will support you while studying through the themes of each module, provide guidance to complete assignments, and prepare you for the examination.

You will receive multimedia lectures for each module as per the notifications on Edutel Online app, and in confirming letters. In the multimedia lectures the Lecturers will discuss the themes and the activities in the modules. You will receive guidelines on how to answer questions in the compulsory assignments.

The multimedia lectures include the contact details of the lecturers. These contact details will make it easier for you, should you have an inquiry.

After the marking of the assignments, you will receive three more multimedia lectures. The three multimedia lectures will respectively address general problems experienced while marking the assignments; give an overview of the module concerned; and provide guidance on the structure of the examination paper, advice on how questions should be answered as well on how to prepare for the examination.



CHAT ROOMS

After you have watched a multimedia lecture, you have the opportunity to communicate with the Lecturers via the Chat feature on Edutel Online.

Benefits

The chat room is useful for gaining more information about the content of each module from the lecturers for a specific module, as well as the opportunity to clarify any academic challenges that you experience.

The lecturers can assist and guide you on how to complete assignments and prepare you for the examination for each module.



MEDIA CENTRE SERVICES

The Media Centre covers a wide variety of resources for your use.

- Access to additional reading material, such as reference books and journals which are relevant to your studies.
- Lists of recommended books which are available at other institutions.
- A list of internet websites relevant to your studies and which can be accessed via the web.
- Access to the services of EBSCOhost (electronic library).
- Printing and copying services at a cost.
- Internet access.
- Downloaded multimedia lectures for use after the presentation date.
- The services of a person to assist in the search for information.



EDUTEL ONLINE APP

In our ongoing efforts to ensure that you receive quality education and stay safe, Edutel Higher Education has created Edutel Online. This innovative **multimedia app** provides access to everything you may need to successfully complete your studies - anytime, and any place!

Edutel Online will give you easy access via your mobile phone, computer, tablet & laptop to:

- All your study material
- Tutorial letters I & II
- Multimedia lectures
- Assignments and online examinations
- Online ICT training
- An English proficiency programme and assessment
- Study methods/Top Performer Programme
- Information on other programmes offered by Edutel Higher Education

Through Edutel Online, you can communicate with your lecturers, support staff, and other important role players. This incredible tool will also send you notifications about your programme.

6. Assessment of Students

To assess achievement of the outcomes of this programme, an approach of continuous assessment will be followed. The assessment process has two dimensions/components that complement each other and are integrated, namely formative assessment and summative assessment.

Formative assessment

One three-part compulsory formative assignment per examinable module must be completed and submitted on the Edutel Online Platform in three parts, namely short questions in Part 1; longer paragraph type questions in Part 2; and a set of 50 multiple-choice questions in Part 3.

The three parts respectively contribute on a 20:50:30 basis to the final assignment mark (i.e. the year mark). Students must obtain at least 40% in the assignment mark to qualify to write the examination in each module. The formative assignments are designed to adequately prepare students for examination.

Non-examinable modules will have three assignments. Assignment 1 makes up/contributes 50%, Assignment 2 makes up/contributes 30%, and the quiz makes up/contributes 20% to the final mark of each module.

Assignments must be done and submitted on Edutel Online.

For examinable modules, final marks carry the following weights:

Your Assignment - contributes 30% to the final mark.

Your Examination - contributes 70% to the final mark.

For non-examinable modules, a quiz on Edutel Online will count 20% and two formal assignments contribute 50% and 30% to the final mark.

Tutorial Letter 2 as well as the three multimedia lectures provide comprehensive feedback to students on formal assignments, as well as guidelines for preparation for the examination. An online Zoom session prior to the examination further ensures that students are supported.

Summative assessment

All modules (excluding Second Additional Language modules and the ICT module) will be assessed through a formal examination which will be conducted on an annual basis.

Examinations

If you register between 1 June and 31 December, you will write your first semester examinations during May/June the following year.

Should you register between 1 January and 31 May you will write your first semester examination during November of the same year.

7. Rules of Combination

Rules of combination - BEd (Foundation Phase Teaching)

The programme is designed and structured in such a way that it forms an integrated programme, made up of different modules. Provision is made for logical progression from one module to the next and the interrelatedness of the different modules is emphasised continuously by cross-referencing to other modules as the programme unfolds. The interrelatedness of the specialisation modules, fundamental modules and the work-integrated modules (Teaching Practice) is emphasised in all modules.

Progression Modules

- Home Languages, First Additional Languages, Second Additional Languages and WIL are presented as progression modules. In sequence, the first module leads to the second module in a predetermined order until the third module is completed.
- Mathematics is also presented as progression module. There are two modules presented in a predetermined order.
- Students cannot register for a progression-, second- or third-year module if any first- or second-year progression modules are outstanding. You may still register for any of the other modules offered in the specific year of study.
- Students will be allowed to repeat a progression module with the next intake.

Complying with the requirements for School-based Teaching Practice during the study is a requirement for completing the qualification.

8. When can I register?

There are two study cycles per academic year.

Study Cycle 1

Register between 1 January and 31 May.
You will write exams on your first semester modules in November and your second semester examination in May/June the following year.

Study Cycle 2

Register between 1 June and 31 December
You will write exams on your first semester modules in June the following year and your second semester examination in November.

Visit: <https://www.edutel.co.za/bachelor-of-education-in-foundation-phase-teaching/> to register online.



9. Study Cost & Student Financial Aid

Students can arrange to pay their course fees by bank debit order, cash monthly, cash in advance, credit card, or in some cases by salary stop order (Fundi). Students can apply for study loans at various financial institutions.

The cost to study the BEd (Foundation Phase Teaching) is indicated on the Application Form.

10. Policies and Procedures

Edutel Higher Education (Pty) Ltd has a comprehensive set of policies and procedures to ensure that students get quality education and support. These include, but are not limited, to:

- Cancellation Policy - Cancellation of course fees will not be allowed once you are accepted and registered as a student. Consideration will only be given in exceptional cases. You may cancel your studies, but you will remain liable for payment of your course fees.
- Assessment Policy
- Code of Conduct for Students
- Student Support Policy
- Disability Policy - Edutel Higher Education seeks to address any unfair discrimination on the basis of disability and thereby provides access for students who wish to further their studies.
- RPL Policy
- Grievance Policy
- Health and Wellness Policy - Edutel Higher Education takes the health and wellness of its staff and students seriously and therefore has a well-developed policy in place, managed by a Health and Wellness Committee.



Students may access these policies on Edutel Online.

11. Governance and Management of Edutel Higher Education

I, the undersigned hereby declare that:

- » Edutel Higher Education (Pty) Ltd is registered with the Department of Higher Education and Training (DHET) and is accredited to offer the programmes reflected in this brochure.
- » Edutel Higher Education (Pty) Ltd will not exceed the number of enrolments that the facilities and equipment can reasonably accommodate.
- » Edutel Higher Education (Pty) Ltd has sufficient space, equipment and instructional material to provide education and training to meet the standards set, and achieve the objectives of each programme.

- » Edutel Higher Education (Pty) Ltd will maintain full records of each student's admission, academic progress and assessment of learning, in respect of each programme.
- » All the sites listed in this application are administered and controlled by Edutel Higher Education (Pty) Ltd.
- » Edutel Higher Education (Pty) Ltd has the necessary academic and support staff, with appropriate qualifications and experience, to achieve the objectives of each programme.
- » Officials from authorised institutions will be allowed unconditionally to conduct site visits for the purpose of verification and to ensure compliance with the conditions of registration.

AB Pelsler

CEO

12. Directors, Chief Executive and Senior Management

Directors	<ul style="list-style-type: none"> • Andries Bernardus Pelsler • Oscar Stephen Bashing • Jolene Pillay
Chief Executive Officer	<ul style="list-style-type: none"> • Andries Bernardus Pelsler
Assistant Chief Executive Officer	<ul style="list-style-type: none"> • Chanel Theron
Senior Management	<ul style="list-style-type: none"> • Oscar Stephen Bashing- General Manager • Prof Rika Joubert- Academic Head • Dr Jean van Rooyen- Assistant Academic Head • Kevin Schoultz- Registrar • Dr Alta du Plessis - Academic Programme Coordinator • Jolene Pillay- Programme Coordinator Administration

13. Qualifications of Academic Staff

Academic Advisory Board

Prof HJ Joubert (Academic Head)	BSc (UP); TDHE (NKNWUP); FDE (CEFT); BEd (UP); MEd (UP); PhD (UP)
Prof K Bipath	BA, TDHE, BEd, MEd (UJ) , DEd (UJ)
Prof P du Plessis	BA (Unisa); BEd Hons (Unisa); MEd (RAU); PhD (UP)
Prof LM Swanepoel	BA (UFS), HED (UFS), BEd Hons (UFS) MA (UFS), D.LITT (UFS)
Prof HJ van Vuuren	BA (UFS), HDE (UFS), BA Hons (UFS), BEd (UFS) MEd (UFS), PhD (NWU)

Dr D Naidu	BA (University of Westville), HED (Unisa), BEd (Unisa), FDE (Rand Afrikaans University), MEd (Rand Afrikaans University), PhD (Wits)
Dr JW van Rooyen	BSc (UP), TDHE (NKP), BSc Hons (RAU), BEd (UP), MEd (UP), PhD (UP)
Ms M Frazer	National Diploma Marketing (Technical Witwatersrand), BTech Marketing (UNISA), Masters in Commercial Marketing Management (UJ), Professional Diploma in Digital Marketing (Digital Marketing Institute)

Academic Staff

Dr A du Plessis (Academic Programme Coordinator)	BEd, BEd Hons, MEd, DEd
Dr JG Drotsky	BA (HDE), BA (Hons), MA, D.Litt
Dr Z Made	BA, BA Hons, MEd, DLitt
Dr M Snyman	BA (Ed), BA (Hons: Afrikaans), MEd, DEd
Ms FC Piet	PTC, BA, BA Hons, MA
Ms K Fernandes	BEd
Miss M D Leshabane	BA, BA Hons, MA in African Languages
Ms M Lombard	BEd, BEd Hons, MEd, PhD
Ms R Mogapi	SPTD, BTech
Ms Y Múller	BEd, BEd Honours
Mr MM Nyambi	Further Diploma in Education Management (FDE), MEd
Ms E Ras	Programme in Reception Year Teaching, National Diploma Educare, LLB, BLC
Mrs WJC Sephton	Hoër Onderwys Diploma (Pre-primary & Junior primary work), BEd Hons (Educational Management)
Ms NS Sithole	BA, BA Hons, MA
Miss KC Slinda	Post Graduate Certificate in Education (Senior and FET), BA, BA Hons
Ms N Stemela	BA, BA Hons
Mrs L van der Westhuizen	Teacher's Diploma, BA, BA Hons, MPhil
Ms A van Eeden	HED, BEd Hons ECD
Mrs Y van Staden	HBED (Inclusive Education and Barriers to Learning), HOD Pre-and Junior Primary (ECD) Diploma
Mrs L Viljoen	BEd, BEd Hons

For a comprehensive list of services offered by the Edutel Group, visit our website at:
www.edutel.ac.za



SOCIAL MEDIA



Contact Detail:
+27 (11) 760 3668

Mail:
marketing@edutel.ac.za

Website:
www.edutel.ac.za

Address:
Edutel Building, 1st Floor
Cnr Ontdekkers Road & Crane
Avenue Horison, Roodeport
1724